

The people will enter Zion* singing. What will happen then?

Match each symbol with its letter to fill in the blanks.



- | | | | | |
|----------------|----------------|----------------|----------------|-----------------|
| ρ = A | ♪ = G | $\#$ = K | — = O | pp = V |
| ♪ = D | ♪ = H | \flat = L | — = R | r = W |
| ♪ = E | ρ = I | z = M | f = S | \parallel = Y |
| \circ = F | ρ = J | \flat = N | ff = T | |

Blank musical staves for a matching exercise. The symbols to be placed are:

- Staff 1: ♪ , \flat , ρ , ♪ , \flat , ♪ , f , f
- Staff 2: ρ , \flat , ♪ , ρ , — , \parallel , r , ρ , \flat , \flat
- Staff 3: — , pp , ♪ , — , ff , ρ , $\#$, ♪
- Staff 4: ff , ♪ , ♪ , z , ρ , \flat , ♪
- Staff 5: f , — , — , — , — , r , ρ , \flat , ♪
- Staff 6: f , ρ , ♪ , ♪ , ρ , \flat , ♪ , r , ρ , \flat , \flat
- Staff 7: \circ , \flat , ♪ , ♪ , ρ , r , ρ , \parallel

Ages 7+

December 19, 2021 • Isaiah 35:1-10

The Return to Zion

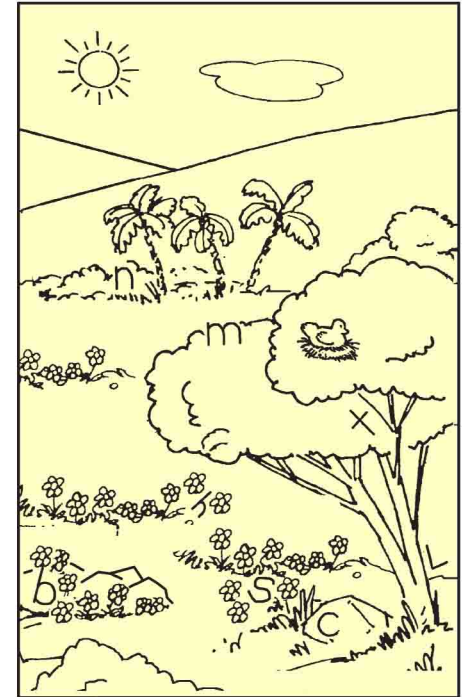
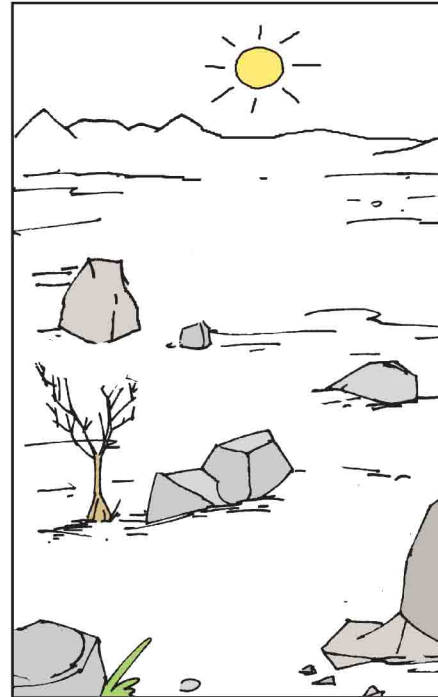
Isaiah said that when God restores Israel, everyone and everything will rejoice. The desert and the parched land will be glad, the wilderness will rejoice and blossom.

Draw animals in the desert.



Find the underlined letters.

Like the crocus, it will burst into bloom.



Westminster Presbyterian Church

Dallas, Texas

* Zion is another name for the city of Jerusalem.

What does this Scripture tell the people to do?

Use this code to find out.

A B C D E F G H I J K L M N O P Q R S T U V W X Y Z
26 25 24 23 22 21 20 19 18 17 16 15 14 13 12 11 10 9 8 7 6 5 4 3 2 1



8 7 9 22 13 20 7 19 22 13
7 19 22 21 22 22 25 15 22
19 26 13 23 8 8 7 22 26 23 2
7 19 22 16 13 22 22 8
7 19 26 7 20 18 5 22 4 26 2
8 26 2 7 12 7 19 12 8 22
4 18 7 19 21 22 26 9 21 6 15
19 22 26 9 7 8 25 22
8 7 9 12 13 20 23 12 13 12 7
21 22 26 9 2 12 6 9 20 12 23
4 18 15 15 24 12 14 22

What will happen next?

Find the underlined words in the word search below.

Then will the eyes of the blind be opened
and the ears of the deaf unstopped.



Water will gush forth
in the wilderness and
streams in the desert.



A	B	U	Y	R	F	A	E	D	X	W	H	L
N	D	N	W	N	B	O	P	Q	L	I	T	L
B	F	S	C	A	Q	O	A	M	M	L	H	E
L	V	T	T	F	O	R	T	H	H	D	E	J
I	M	O	R	T	C	P	M	W	I	E	N	K
N	P	P	E	Q	V	S	R	A	E	R	S	D
D	C	P	S	S	D	P	G	N	J	N	T	G
L	E	E	E	G	U	S	U	R	D	E	R	U
K	E	D	D	T	E	E	B	I	E	S	E	S
Z	R	U	C	Y	W	I	B	O	N	S	A	H
A	J	F	E	L	T	I	H	G	E	Y	M	Z
K	B	S	S	T	R	E	L	Y	P	G	S	A
V	W	A	T	E	R	J	K	L	O	H	I	F